

PATRIOT

-BRAUN INTRODUCES AN "ALL PURPOSE" FIRE/RESCUE/TRANSPORT APPARATUS SPECIFICALLY DESIGNED FOR RESPONSE TO OVER 95% OF EMERGENCY CALLS -

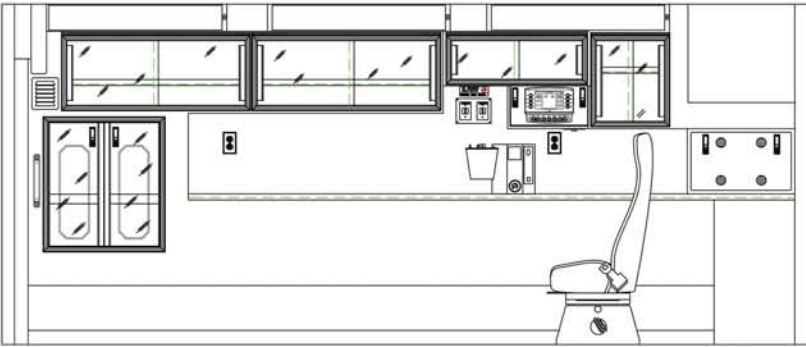
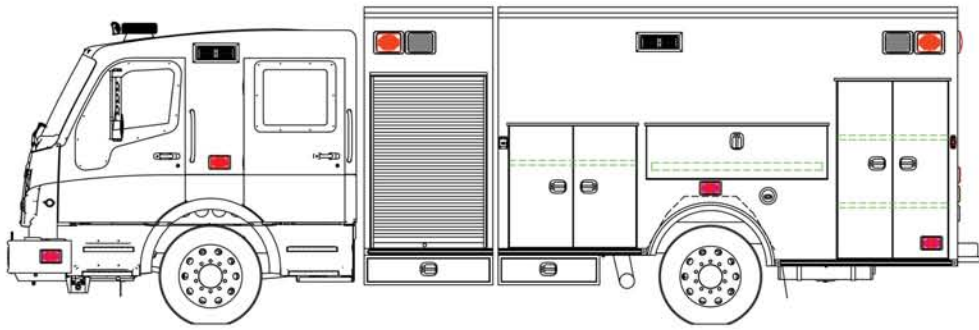


- LIGHT RESCUE CAPABLE
- 250 GALLON WATER/10 GALLON FOAM CELL
- FULL TRANSPORT CAPABLE
- QUALITY AND SAFETY - BRAUN STANDARD



- SOLID BODY CONSTRUCTION DESIGN
- LIGHT SUPPRESSION CAPABLE
- ONBOARD CAFS UNIT
- SPARTAN FURION CHASSIS

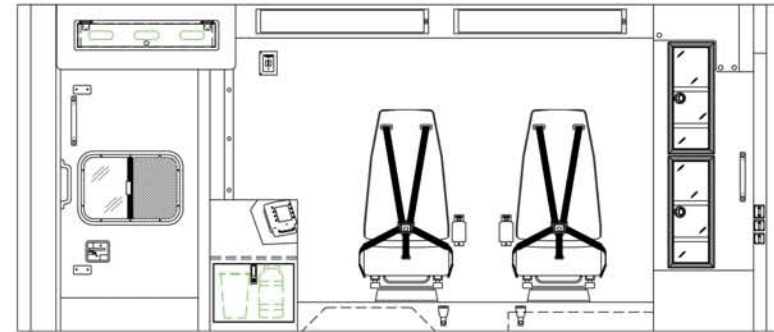
www.BraunAmbulances.com



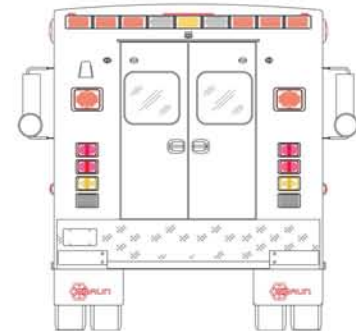
HANDCRAFTED AMBULANCES
1170 Production Drive
Van Wert, Ohio 45891

p 419.232.7020 f 419.232.7070

PATRIOT



Notes:



CHASSIS SPECS:

- **CAB-OVER DESIGN**
- **WELDON MULTIPLEX ELECTRICAL SYSTEM**
- **ALLISION 3000EVS TRANSMISSION**
- **30,660 TOTAL G.V.W.R.**
- **27.5 CURB TO CURB TURN RADIUS**

PUMP SPECS:

- **PLAS-MAC TANK 250 GAL WATER/10 GAL FOAM CELL**
- **HANNAY HOSE REEL WITH 100' x 1" BOOSTER HOSE**
- **TASK FORCE TIP NOZZLE D75DP**
- **EQUALIZER – BALANCING/MIXING DEVICE**
- **PUMP/ENGINE PERFORMS TO NFPA1906**